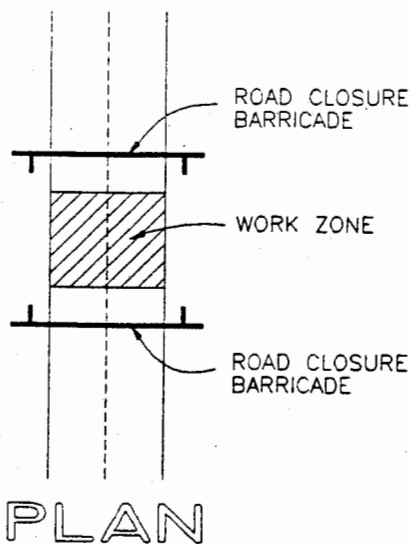


SECTION VIEW

NOTES:

1. All timber shall be S4S.
2. White and orange painted stripes shall be reflectorized per FHWA II (Engineering Grade Sheeting).
3. Traffic Control Devices shall be of high intensity sheeting.
4. For rail to post connection, provide 2-3/8" Carriage Bolts with cut washers and nuts.
5. Advance construction signs are required.
6. Use N-2 with Visual Impact Performance (VIP) sheeting.
7. For 5'-0" barricade, use only one C-2 and N-2 mounted at the center of the assembly.



STD5\305C

01/20/95

SAN BERNARDINO COUNTY TRANS. DEPT.

KEN A. MILLER
Director of Transportation

ROAD CLOSURE BARRICADE

305C