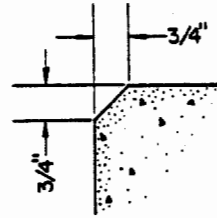
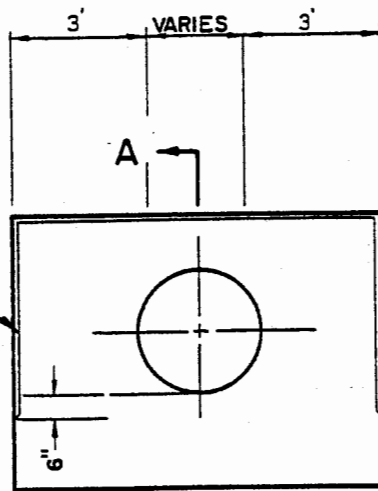


PLAN

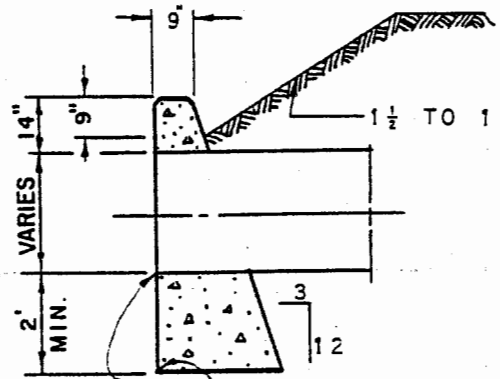


CHAMFER
DETAIL



ELEVATION

CHAMFER



FOR ELEVATIONS
SEE PROFILE

SECTION A-A

NOTES:

1. ALL CONCRETE SHALL BE CLASS B CONCRETE.
2. ALL EXPOSED CORNERS SHALL BE CHAMFERED 3/4".
3. DESIGN FEATURES SHALL CONTROL THE INSTALLATION OF THIS HEADWALL.

SAN BERNARDINO COUNTY ROAD DEPARTMENT

DATE: F.V.C. 7-65

M. A. Nicholas
COUNTY ENGINEER

GRAVITY HEADWALL

201