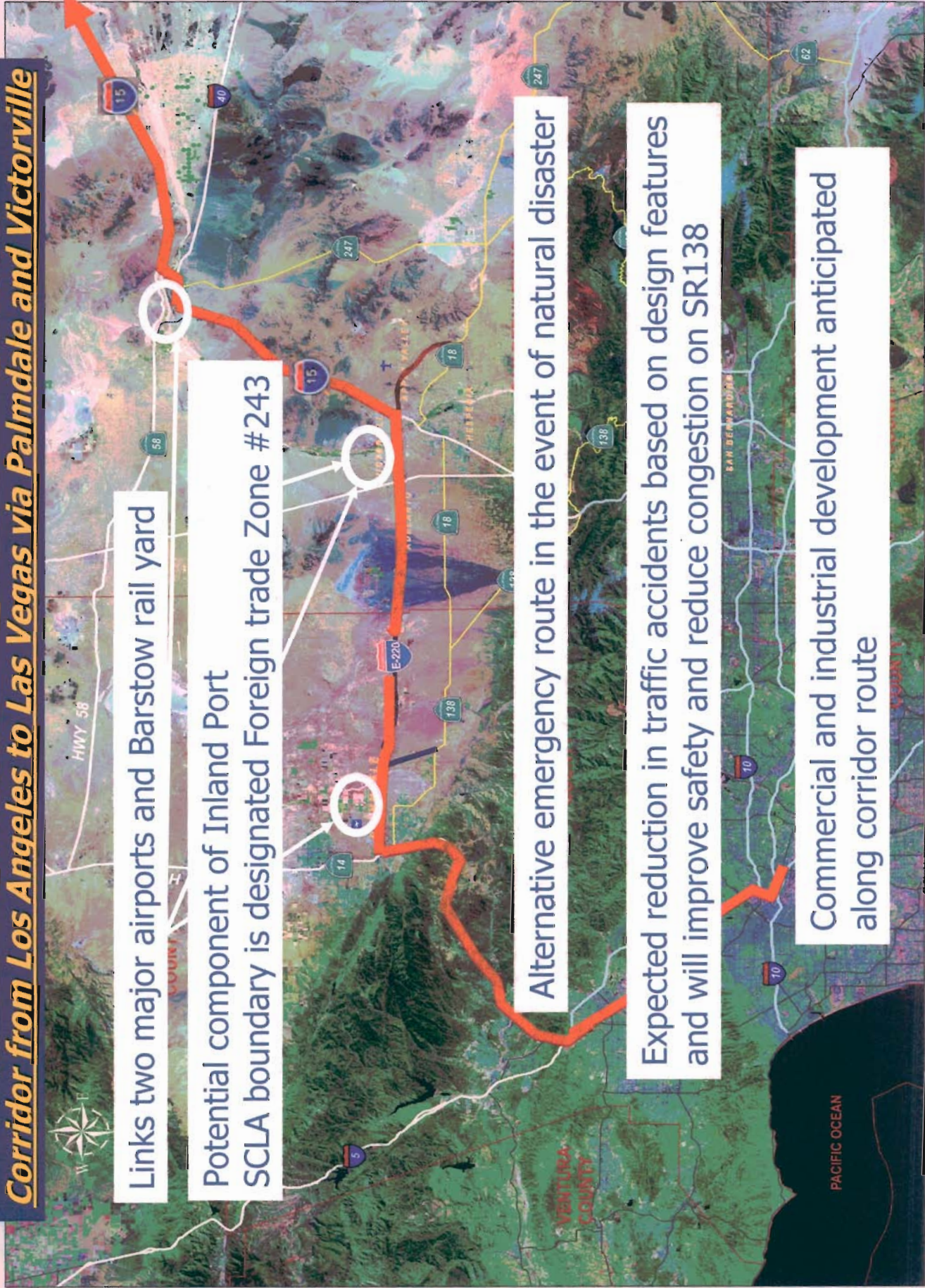


# HIGH DESERT CORRIDOR

***E220 – Designated in SAFETEA-LU as a High Priority Corridor from Los Angeles to Las Vegas via Palmdale and Victorville***



Links two major airports and Barstow rail yard

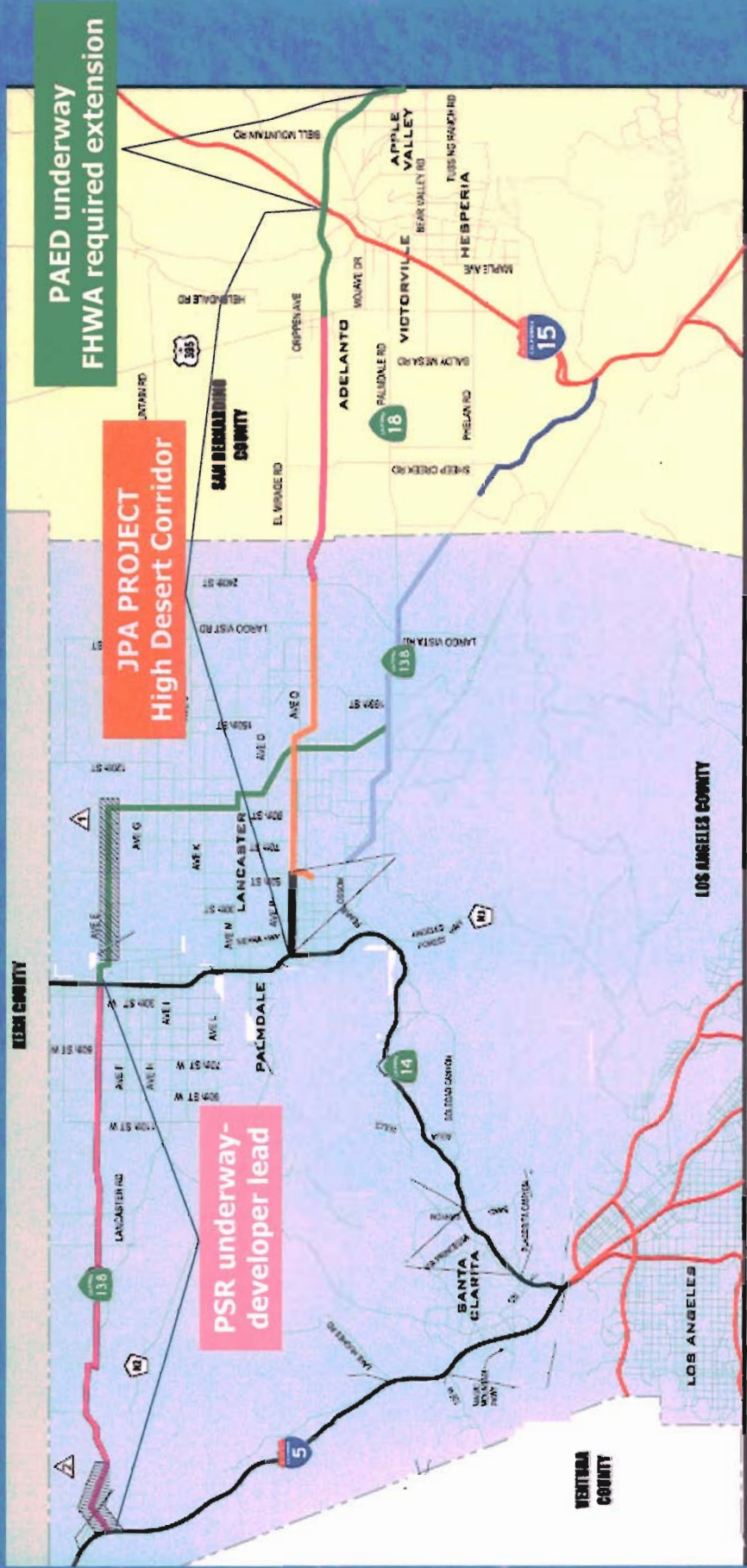
Potential component of Inland Port  
SCLA boundary is designated Foreign trade Zone #243

Alternative emergency route in the event of natural disaster

Expected reduction in traffic accidents based on design features and will improve safety and reduce congestion on SR138

Commercial and industrial development anticipated along corridor route

# 1930's LA BYPASS (Improve SR-138) 1990's Various independent studies 2004 North County Combined Study (I-5 to I-15)



**LEGEND**

|                 |                           |
|-----------------|---------------------------|
| 15              | Freeway Lane Designation  |
| 4               | HOV Lane Designation      |
| Green line      | 4-Lane Expressway         |
| Red line        | 6-Lane Expressway         |
| Black line      | Freeway                   |
| Orange line     | 8-Lane Freeway/Expressway |
| Blue line       | Truck Climbing Lanes      |
| Light blue line | 4-Lane Highway            |

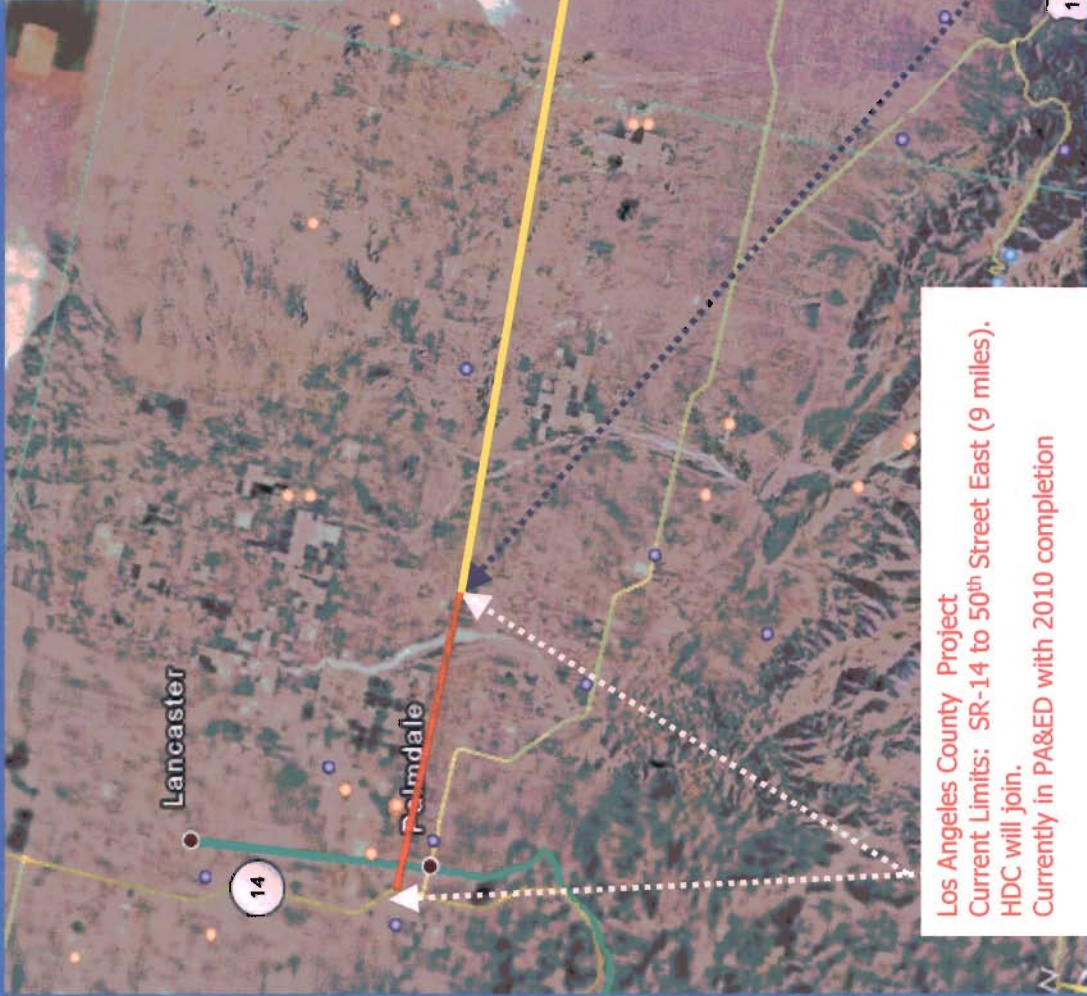
## NORTH COUNTY COMBINED HIGHWAY CORRIDOR STUDY

- Alignment selection to be coordinated with the City of Lancaster and the Los Angeles Consolidated Sanitary District #14.
- Construction of Centennial Ranch will require upgrading of planned 6-lane expressway to 6-lane freeway between I-5 and N2.



March 1, 2004

# Current Projects-SR14 to I-15



San Bernardino County Project  
 Current Limits: From State Highway 395 To SR-18(20 miles)  
 Estimate \$950million  
 Currently in PA & ED phase. Submit by 2008  
 Review and final PA&ED approval by Dec 2009  
 Construction ready 2012

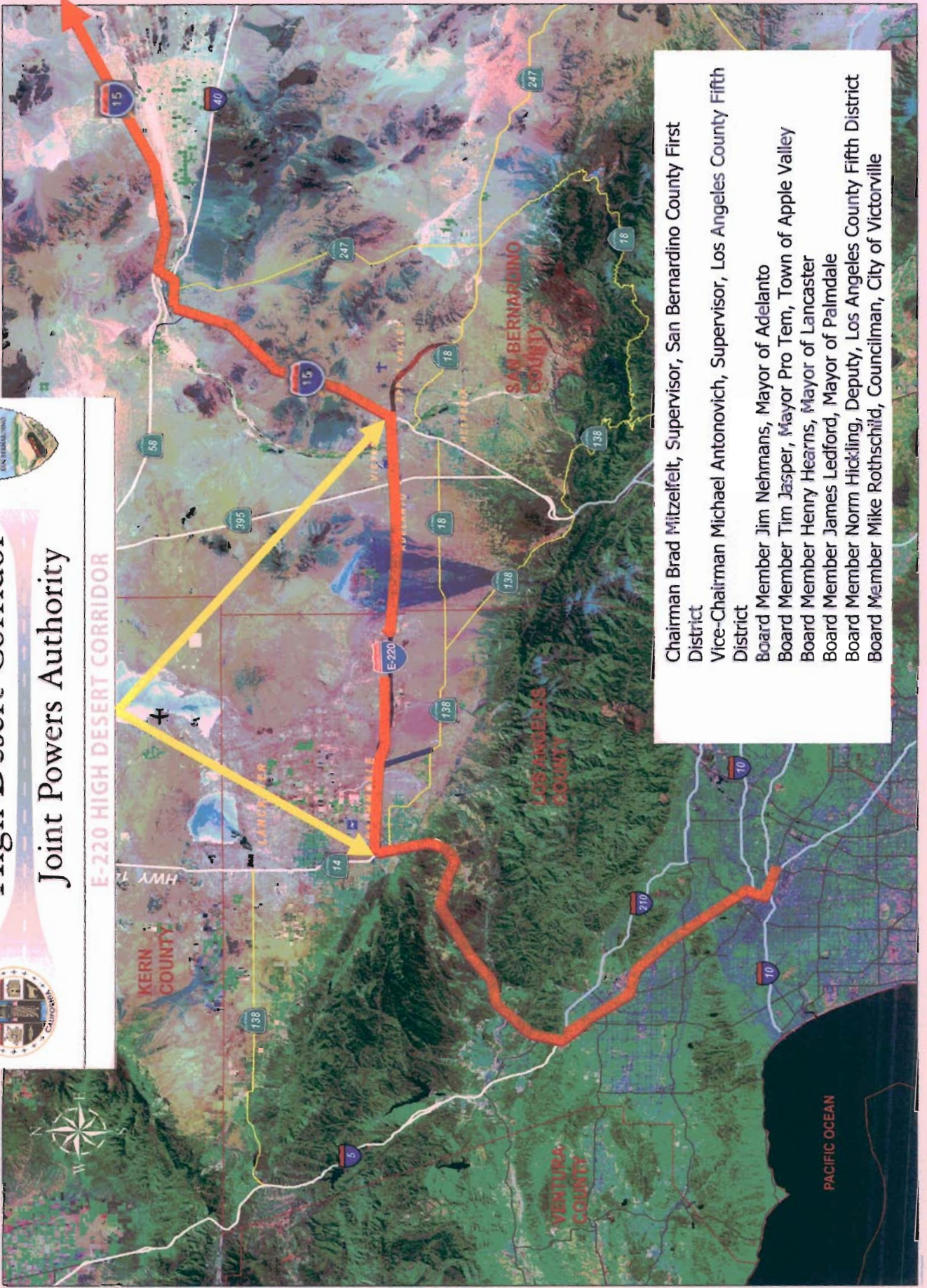
\$14 million federal funds (demo) administered by Victorville.  
 Currently there is \$6 million allocated with a \$1.5 million match paid by Victorville and Apple Valley.  
 City of Victorville has committed \$200 million to construct

Los Angeles County Project  
 Current Limits: SR-14 to 50th Street East (9 miles).  
 HDC will join.  
 Currently in PA&ED with 2010 completion

East/west connection project  
 Current Limits: 50th Street East to US-395, HDC will join. (32 miles)  
 PSR completed by Caltrans December 2006



# High Desert Corridor Joint Powers Authority



Chairman Brad Mitzelfelt, Supervisor, San Bernardino County First District  
 Vice-Chairman Michael Antonovich, Supervisor, Los Angeles County Fifth District  
 Board Member Jim Nehmans, Mayor of Adelanto  
 Board Member Tim Jasper, Mayor Pro Tem, Town of Apple Valley  
 Board Member Henry Hearn, Mayor of Lancaster  
 Board Member James Ledford, Mayor of Palmdale  
 Board Member Norm Hickling, Deputy, Los Angeles County Fifth District  
 Board Member Mike Rothschild, Councilman, City of Victorville