



## Department of Public Works

- Flood Control
- Operations
- Solid Waste Management
- Surveyor
- Transportation

Gerry Newcombe  
Director

## PUBLIC NOTICE – PROJECT FACT SHEET

- DATE:** May 17, 2017
- PROJECT LOCATION:** Needles Highway, between “N” Street and Balboa Place, in the City of Needles as shown on the attached location map (H14873).
- PROJECT DESCRIPTION:** Construction will include pavement resurfacing, replacing guardrail, and placing traffic striping and pavement markings.
- TRAFFIC CONTROL:** Lane closures will be required during much of the construction which may cause delays; however, traffic control will be established on Needles Highway to direct motorists along one lane in each direction.
- ANTICIPATED CONSTRUCTION DATE:** June 2017 through July 2017
- COUNTY VISION:** In cooperation with the City of Needles, this project is funded with federal funds and was approved by our Board of Supervisors upon the passing of the County’s 2016-2017 budget. This project is in line with the County’s Vision of a sustainable system of public safety. In its dedication to this Vision, the Department is continuing its ongoing efforts of constructing improvements on public roads.
- CONTACT:** Haile Ford, P.E., Resident Engineer  
(909) 387-7936 - [hford@dpw.sbcounty.gov](mailto:hford@dpw.sbcounty.gov)

### BOARD OF SUPERVISORS

ROBERT A. LOVINGOOD  
Chairman, First District

JANICE RUTHERFORD  
Second District

JAMES RAMOS  
Third District

CURT HAGMAN  
Vice Chairman, Fourth District

JOSIE GONZALES  
Fifth District

GREGORY C. DEVEREAUX  
Chief Executive Officer



## Department of Public Works

- Flood Control
- Operations
- Solid Waste Management
- Surveyor
- Transportation

Gerry Newcombe  
Director

### AVISO PÚBLICO - INFORMACIÓN DEL PROYECTO

<b>FECHA:</b>	17 de Mayo de 2017
<b>LOCALIZACIÓN DEL PROYECTO:</b>	Needles Highway, entre la calle "N" Street y Balboa Place, en ciudad de Needles. Como indica el mapa que esta incluido (H14873).
<b>DESCRIPCIÓN DEL PROYECTO:</b>	La construcción incluirá rejuvenecimiento del pavimento, reemplazo de la barandilla, y colocando líneas del tráfico y marcas del pavimento.
<b>CONTROL DE TRAFICO:</b>	Cerraduras de carriles serán necesarias durante gran parte de la construcción. La cerraduras podrán causar retrasos; sin embargo, el control de tráfico se establecerá en Needles Highway para dirigir a los conductores de un carril de cada dirección.
<b>FECHA DE CONSTRUCCIÓN ANTICIPADA</b>	Junio de 2017 a Julio de 2017
<b>VISIÓN DEL CONDADO:</b>	Con la cooperación de la ciudad de Needles, este proyecto es financiado con fondos federales y ha sido aprobado por nuestro Board of Supervisors tras la aprobación del presupuesto del condado de 2016-2017. Este proyecto está en línea con la Visión del Condado de un sistema sostenible de seguridad pública. En su dedicación a esta Visión, el Departamento continúa sus esfuerzos de construir vías públicas mejores.
<b>CONTACTO:</b>	Haile Ford, P.E., Resident Engineer (909) 387-7936 - <a href="mailto:hford@dpw.sbcounty.gov">hford@dpw.sbcounty.gov</a>

#### BOARD OF SUPERVISORS

ROBERT A. LOVINGOOD  
Chairman, First District

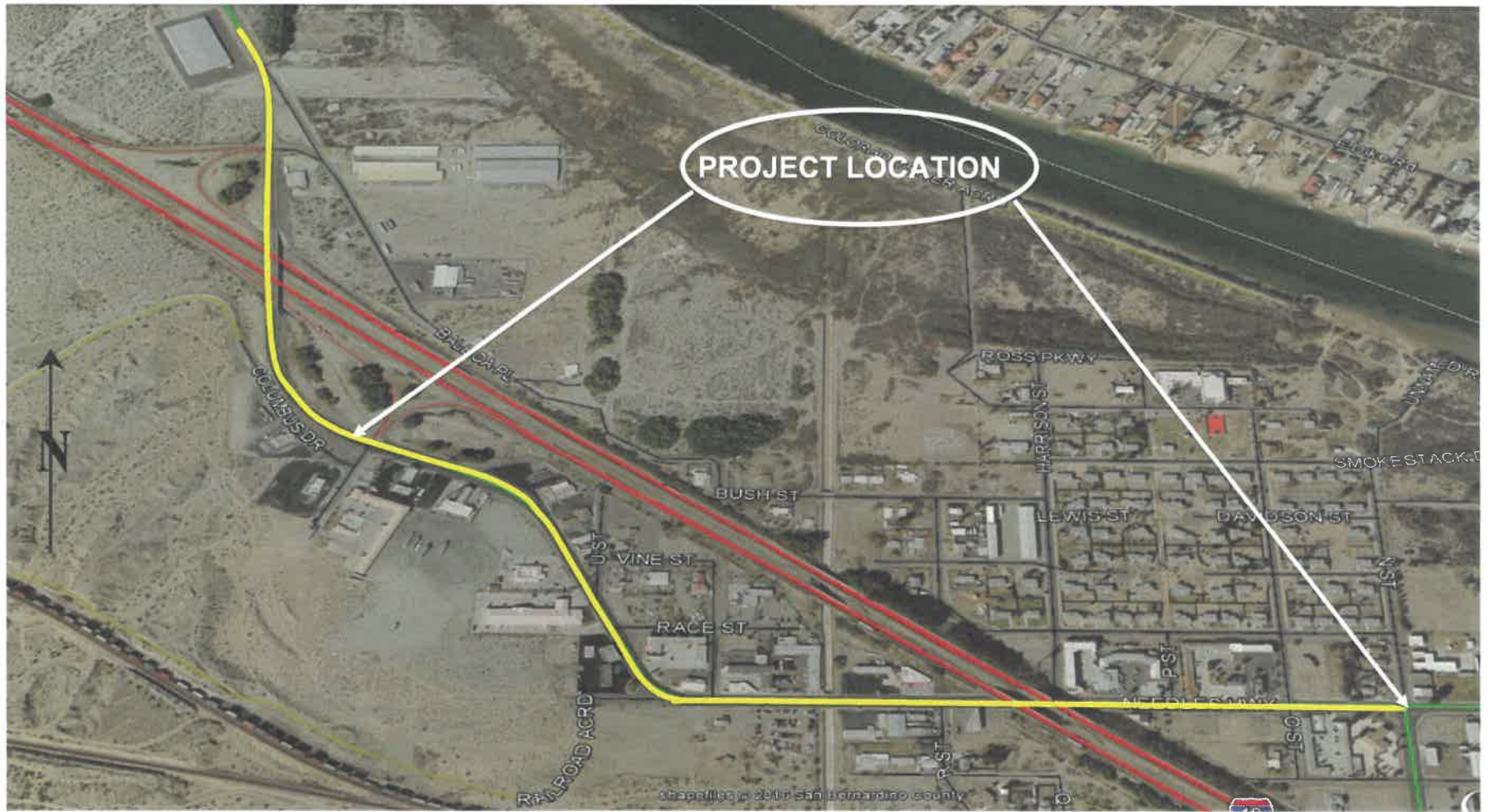
JANICE RUTHERFORD  
Second District

JAMES RAMOS  
Third District

CURT HAGMAN  
Vice Chairman, Fourth District

JOSIE GONZALES  
Fifth District

DENA M. SMITH  
Interim Chief Executive Officer



**NEEDLES AREA**

**LOCATION MAP**

County Road # 588575

Work Order # H14873



COUNTY OF SAN BERNARDINO  
DEPARTMENT OF PUBLIC WORKS

**NEEDLES HIGHWAY SEGMENT N**  
**'N' Street to 600' N of Balboa Place**  
**City of Needles**  
**Chip Seal**

Latitude: 34.848 Longitude: - 114.614