

# Regional Rail in L.A. County

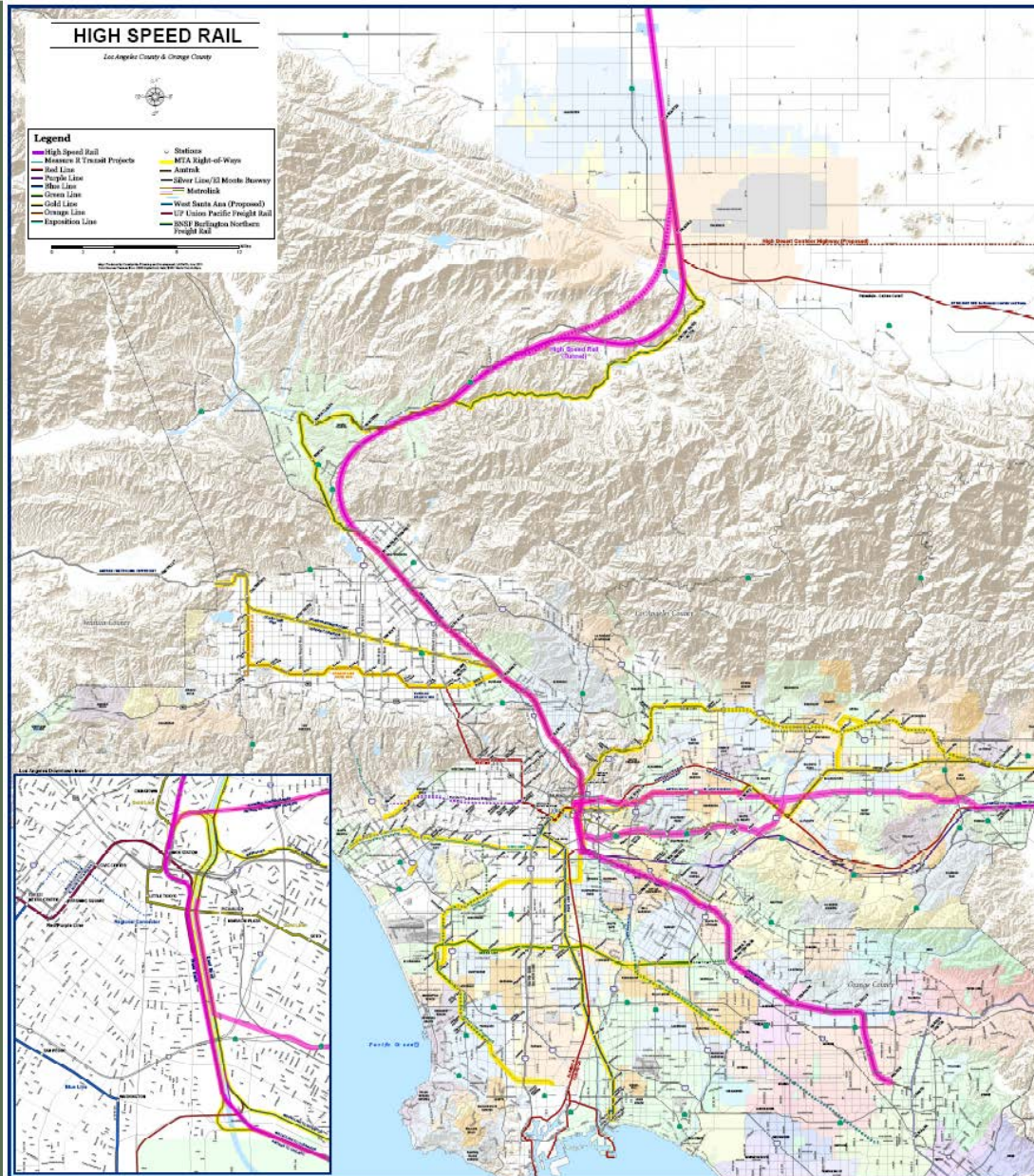
High Desert Corridor JPA

June 6, 2011

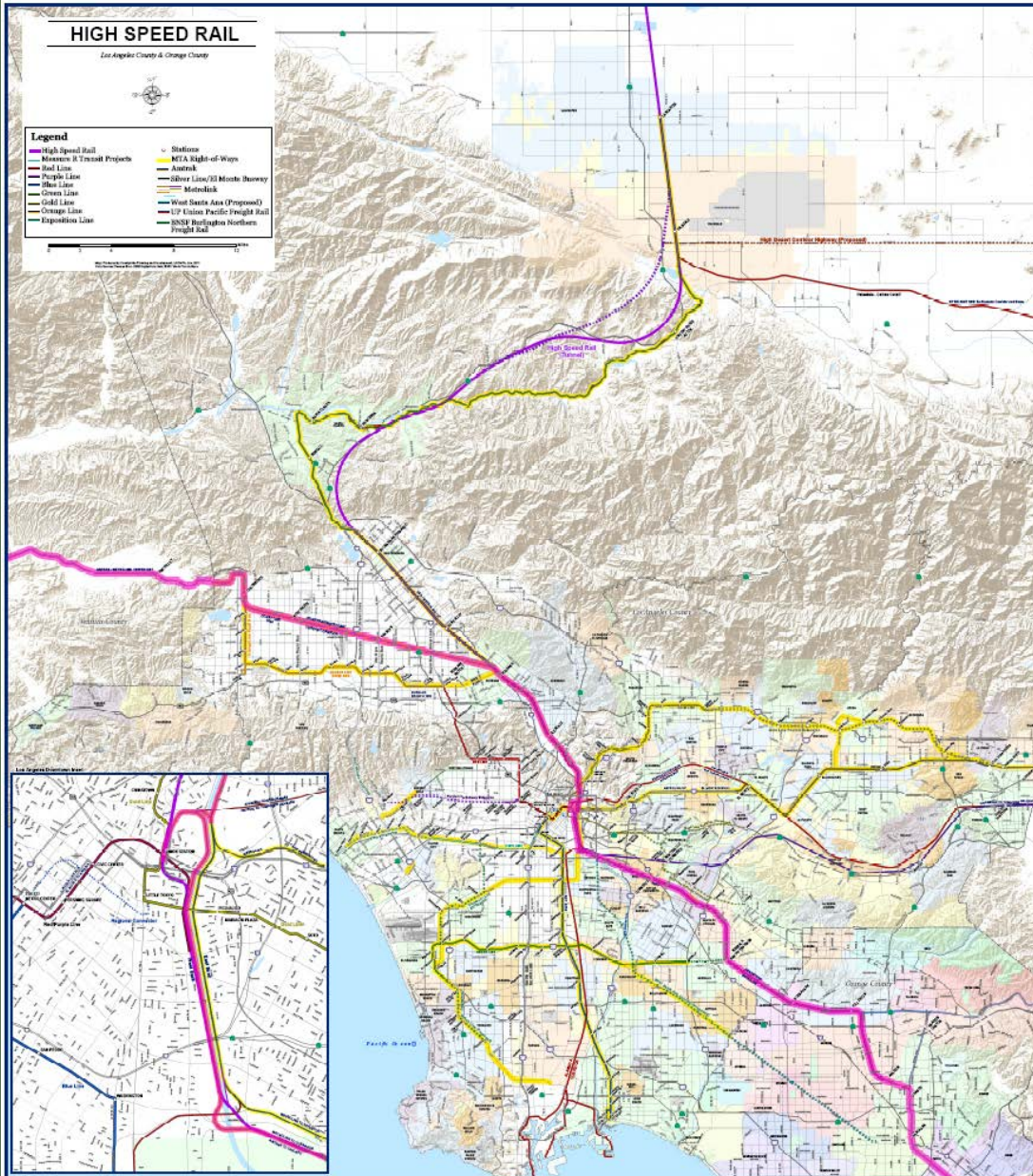


**Metro**

# High Speed Rail Corridors

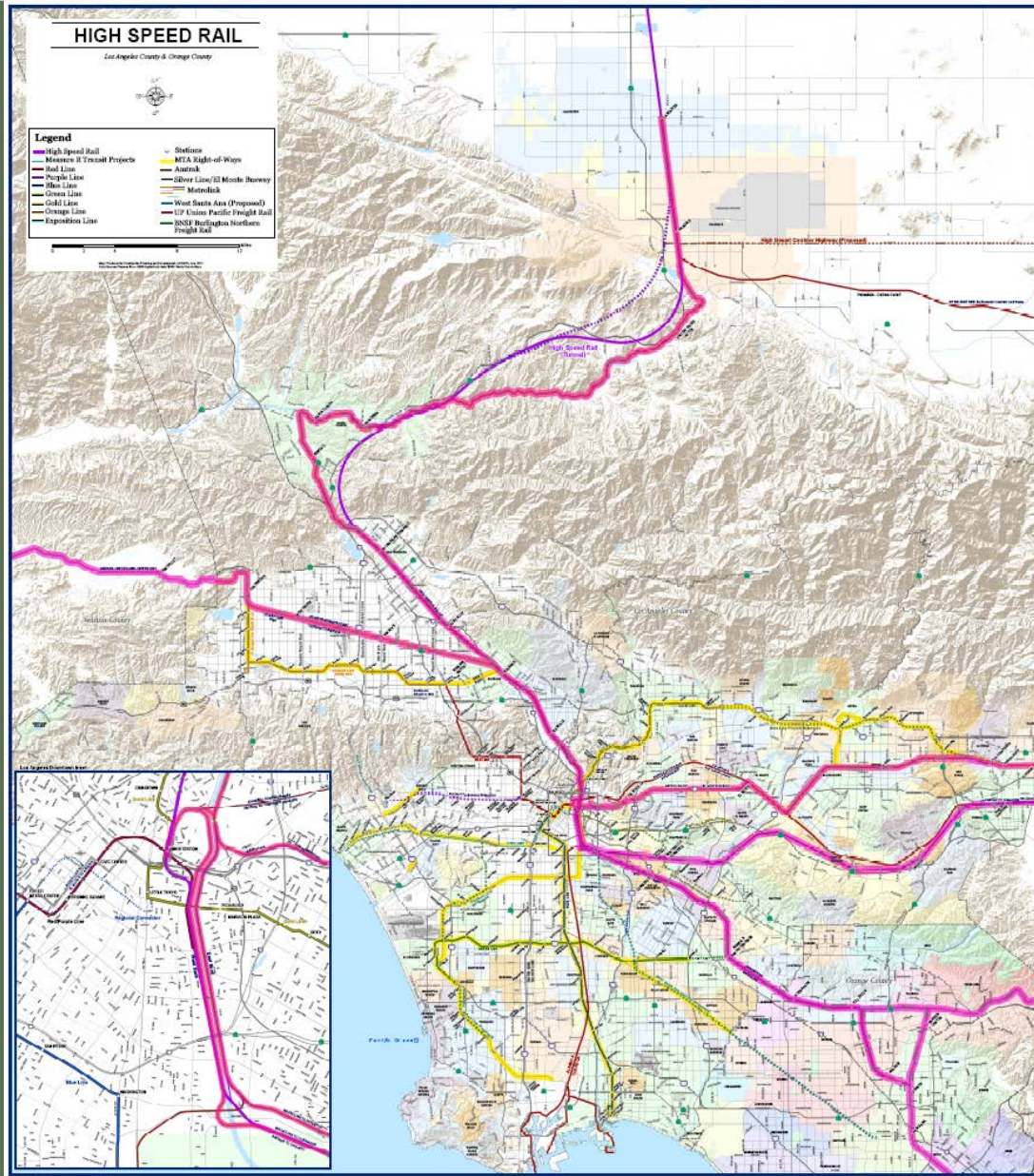


# LOSSAN Corridor



Metro

# Metrolink



# Los Angeles Union Station

- Metro purchased LAUS in April 2011.
- Metro will be conducting a Master Planning Effort for LAUS.
  - Define Los Angeles within the regional transit network.
  - Incorporate regional rail into the overall planning efforts.



# LOSSAN/I-5 Corridor

- Three passenger carriers:
  - Amtrak
  - COASTER
  - Metrolink
- LOSSAN JPB has been formed to work out the strategic planning.



# LOSSAN Corridor

- The current LOSSAN work is concentrating on developing a business plan for the Corridor.
- The LOSSAN CEOs are moving forward with the development of a white paper on a desired business plan.
- Modeling of the passenger rail service options for the Corridor is underway.
- Several Short Term Improvements are being developed.

# Antelope Valley Line - Metrolink

- Travel time between Lancaster and LAUS is two hours, 1.5 by the new express train.
- 5800 daily riders on Metrolink.
- Train speeds limited by track geometry and other issues.
- Segments of the AVL are on the CA HSR system.



# Antelope Valley Line Study

- Reduce travel times to 1 hour.
- Enhance safety
- Phased implementation
  - Geometry improvements
  - Additional tracks
  - Grade separations

# Next Steps

- Developing plans for strategic studies of the other rail lines in L.A. County.
- Working to bring HSR to Southern California
- Supporting the development of grade separation and corridor safety programs.
- Working with the planning group on the LAUS master planning efforts.
- Looking at projects within the County for implementation.

# Regional Rail in L.A. County

Questions?