

Welcome

High Desert Corridor Joint Powers Authority Briefing

June 6, 2011



Metro



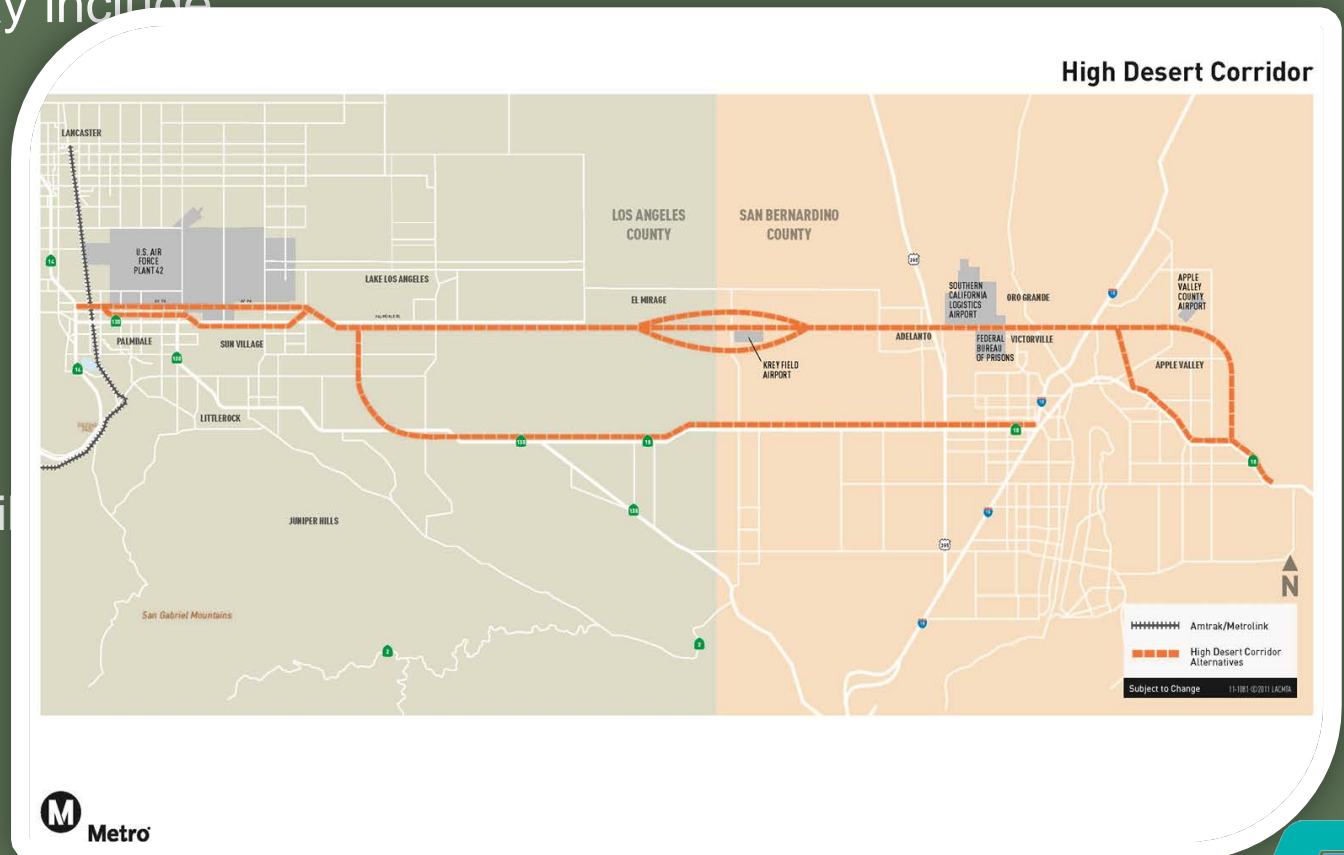
High Desert Corridor (HDC)

- Introduction
- Project Background
- HDC Memorandum of Understanding
- Public/Private Partnerships
- Environmental Study Update
- Outreach Program Update

Environmental Impact Statement/Report

The HDC Project will environmentally clear the 63-mile corridor between State Route (SR)-14 in Palmdale and SR-18 in the Town of Apple Valley. Components may include:

- Freeway
- Expressway
- Toll Road
- Green Energy Corridor
- High Speed Rail



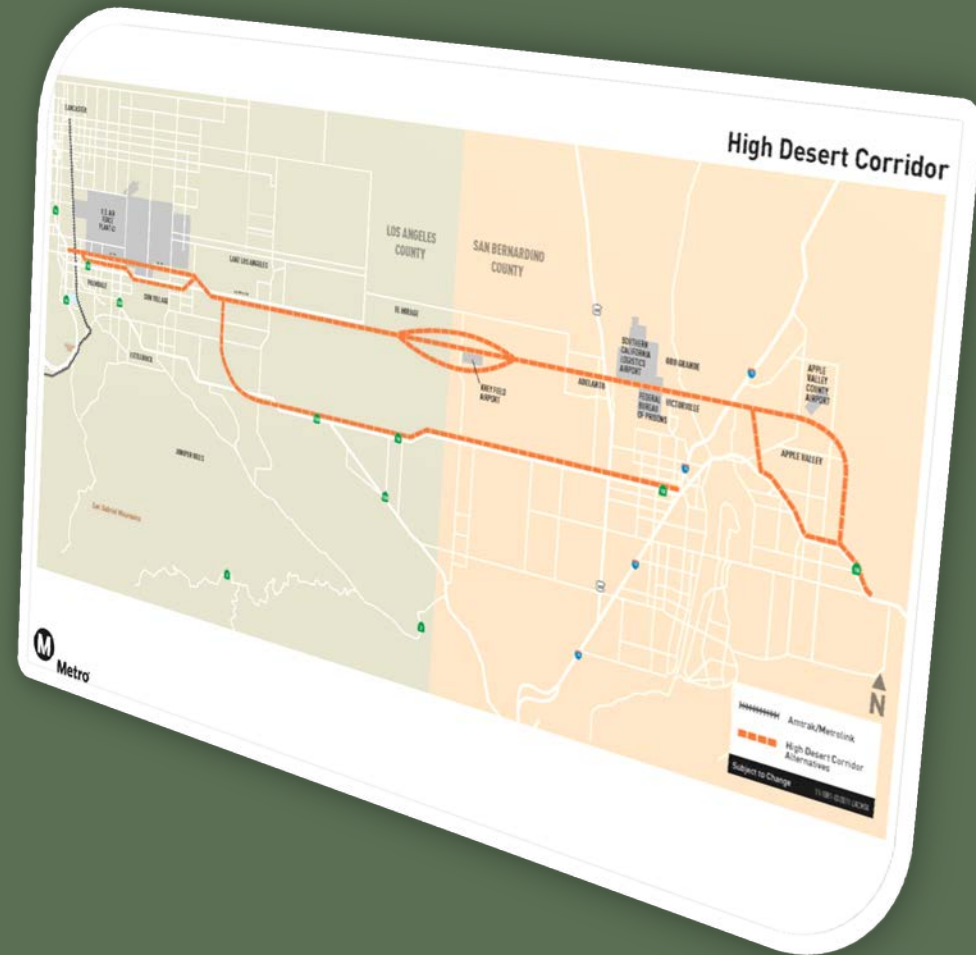
HDC Alternatives

- No-Build Alternative
- Transportation System/
Demand Management (TSM/TDM)
- Freeway/Expressway Alternative
(Avenue P-8, I-15 and SR-18):
 - Variation A
 - Variation B
 - Variation C



HDC Alternatives (cont'd)

- Freeway/Tollway Alternative (Avenue P-8, I-15 and SR-18)
- Corridor Improvements Alternative (Avenue P-8, SR-138 and SR-18)
- Freeway/Expressway Alternative with High Speed Rail right-of-way
- Freeway/Tollway Alternative with High Speed Rail right-of-way
- Hybrid Corridor Alternative

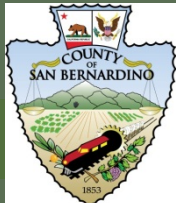


HDC Memorandum of Understanding

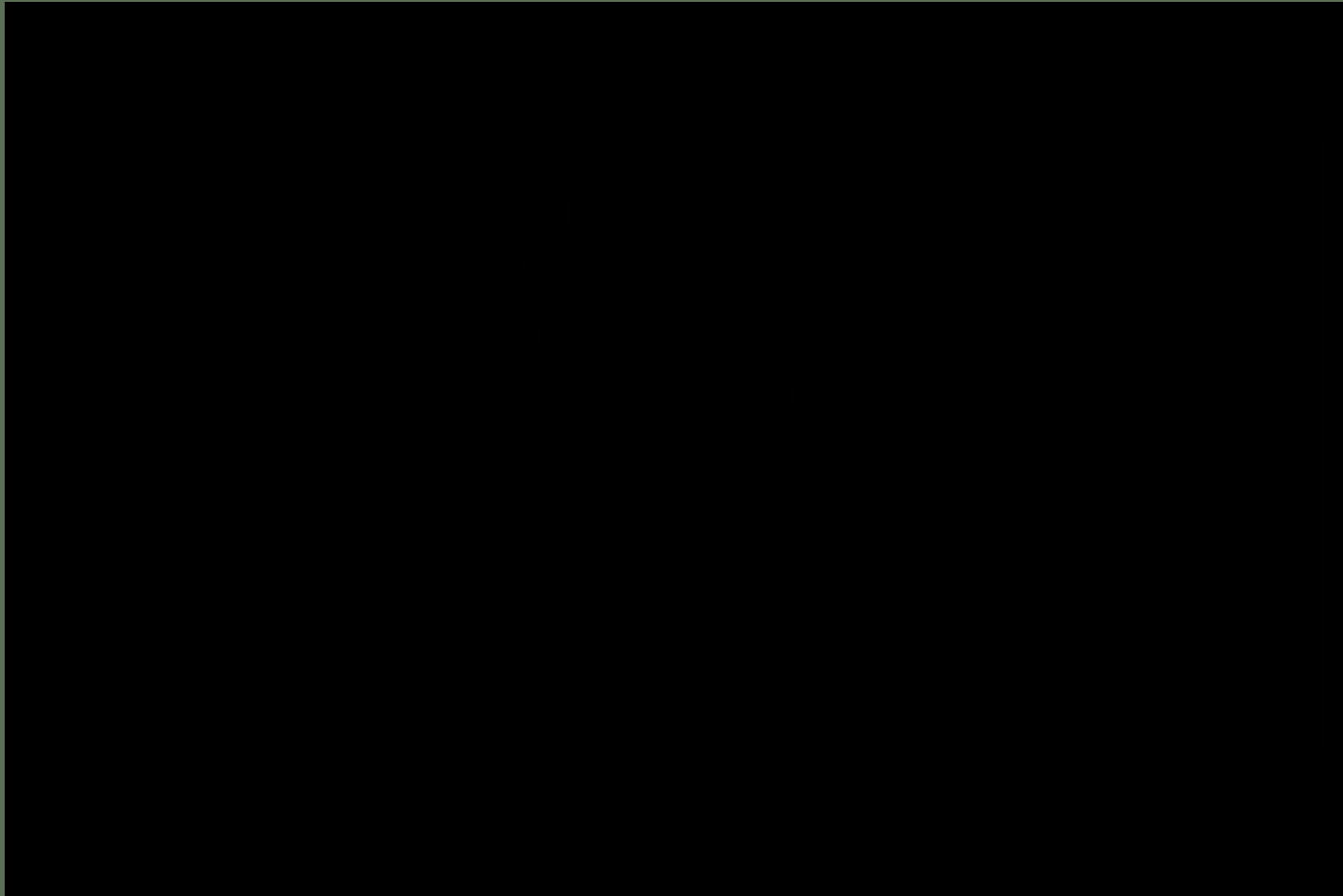
- Metro
- Caltrans
- HDC Joint Powers Authority (JPA)
- SANBAG
- SCAG
- Lancaster
- Palmdale
- Adelanto
- Victorville
- Town of Apple Valley
- Counties of Los Angeles and San Bernardino



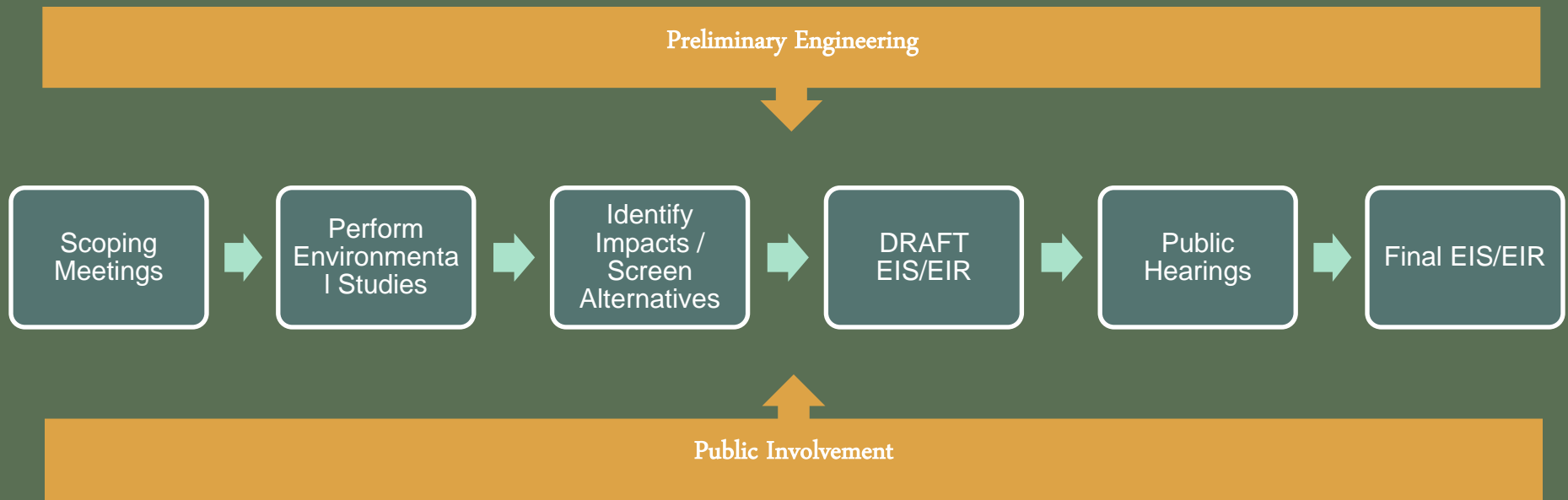
Metro



Project Video



EIS/EIR Process



Scoping Summary

- September 2010 Scoping Meetings:
 - Palmdale, Lancaster, Apple Valley, and Victorville
 - Agency
- Notices:
 - 25,000 meeting notices mailed
 - 6 advertisements
 - Local libraries
- Public Comment Period:
 - September 24 through November 1, 2010 (40 days)

Scoping Summary (cont'd)

- 6002 Agency Meeting:
 - Various agencies attended
 - Discussed potential project constraints:
 - Railroad
 - Hydrology
 - Airports
 - Prison

Scoping Summary Comments

- HDC Scoping Comments:
 - 21% of the comments generally favor the HDC
 - 15% of the comments generally oppose the HDC
 - 61% of the comments are neutral to the HDC



Public Outreach Summary

- April 2011 Project Meetings:
 - 2 Elected Officials Briefings
 - Los Angeles County & San Bernardino County
 - 4 Community Meetings
 - Lancaster, Palmdale, Apple Valley and Adelanto
 - Over 330 attendees
- Notices:
 - 2,500 meeting notices mailed/e-mailed
 - 4 electronic advertisements

Comments

- Comments Reflected the Following Concerns:
 - Traffic impacts, congestion, accessibility, trip diversion and safety
 - Growth inducement
 - Community cohesion and residential property impacts

Comments

- Scoping Concerns:
 - Hydrology, floodplains, water quality impacts
 - Land use and economic impacts
 - Biological resources, sensitive species, habitat fragmentation
 - Air quality and health risks

Alternatives Analysis Update

- Environmental studies are underway
- Scoping input + preliminary study results determine which alternatives/variations to drop from further analysis
- Will be conducted in June/July

Outreach Program Updates

- Over 350 attendees at the Scoping Meetings
- Over 330 attendees at the second round of public outreach meetings.

Social Media

- Metro and Caltrans Project websites
- Facebook and Twitter accounts
- UStream



HDC Next Steps

- Anticipated Schedule:
 - Fall 2011: community meetings, project update
 - Fall 2012: complete Draft EIS/EIR
 - Winter 2012: High Desert Corridor Public Hearings
 - Spring 2013: Final EIS/EIR

How to Stay Involved

- **Mail:** Robert Machuca, Metro Project Manager
One Gateway Plaza, MS 99-22-9
Los Angeles CA 90012
- **Toll-free helpline:** (888) 252-7433
- **Email:** comments to Metro, hdc@metro.net
- **Project Websites:**
 - Metro metro.net/hdc
 - Caltrans dot.ca.gov/dist07/travel/projects/138hdc
- **Facebook:** [facebook.com/metrohdc](https://www.facebook.com/metrohdc)
- **Twitter:** @metrohdc

