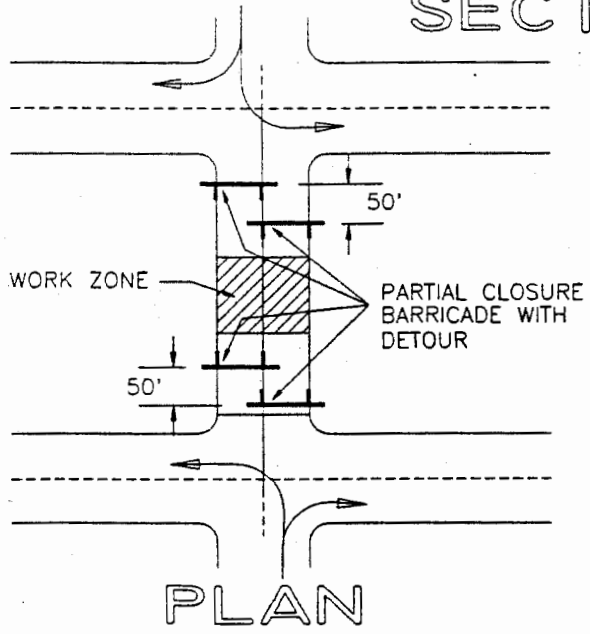


SECTION VIEW



NOTES:

1. All timber shall be S4S.
2. White and orange painted stripes shall be reflectorized per FHWA II (Engineering Grade Sheeting).
3. Traffic Control Devices shall be of high intensity sheeting.
4. For rail to post connection, provide 2-3/8" Carriage Bolts with cut washers and nuts.
5. Advance construction signs are required.
6. For 5'-0" barrigade, use only one C3A and C5 mounted at the center of the assembly.

STD5, 305E

01/20/95

SAN BERNARDINO COUNTY TRANS. DEPT.		PARTIAL ROAD CLOSURE BARRICADE WITH DETOUR	305E
KEN A. MILLER Director of Transportation			