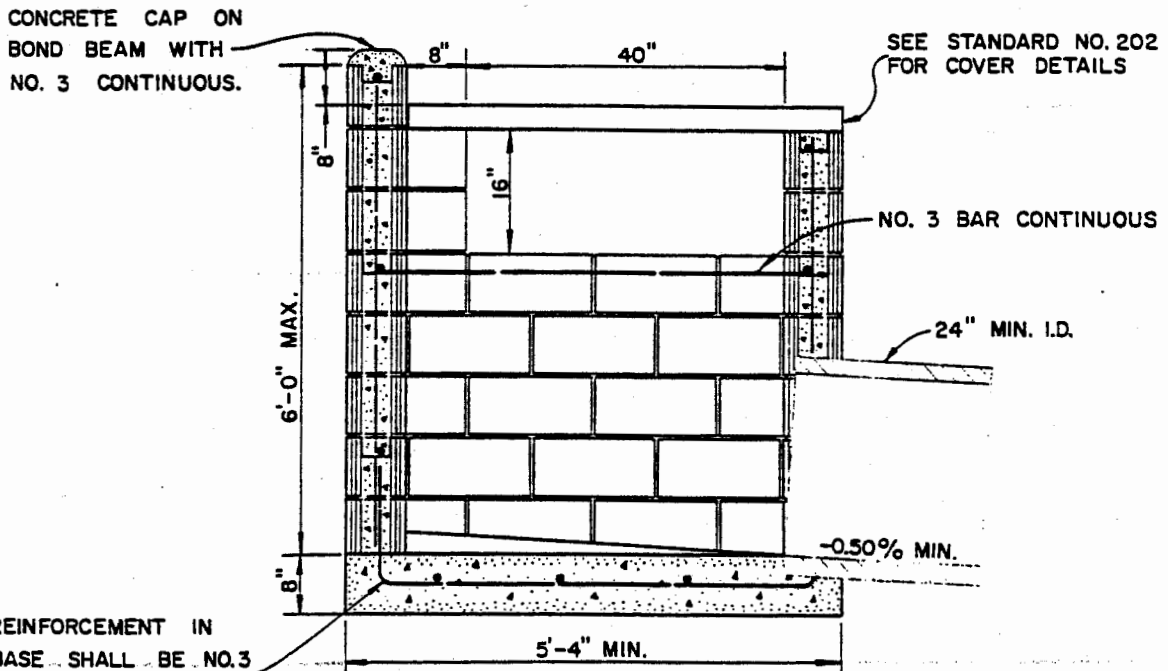


PLAN



REINFORCEMENT IN
BASE SHALL BE NO.3
BARS 16" O.C. BENT
AS VERTICAL DOWELS

SECTION A-A

NOTES:

1. 8" x 8" x 16" CONC. BLOCK WITH NO. 3 STEEL 16" O.C. VERTICAL AND 24" O.C. HORIZONTAL.
2. FILL ALL BLOCKS WITH GROUT.
3. BASE OF CATCH BASIN SHALL BE CONSTRUCTED WITH CLASS 'B' CONCRETE.
4. HORIZONTAL STEEL SHALL BE PLACED IN BOND BEAM BLOCKS.

SAN BERNARDINO COUNTY ROAD DEPARTMENT

DATE: J.E.M. 10-65

M. A. Nicholas
COUNTY ENGINEER

CATCH BASIN
MOUNTAIN ROADS

202a