

Circulation and Transportation

EXISTING PROPOSED

- Freeway
- Major Divided Highway
- Major Arterial Highway
- Major Highway
- Secondary Highway
- Commercial/Industrial Route Collector
- Absorbin Major Highway
- Absorbin Secondary Highway
- State Highway (Special Standards of Conditions)
- Railroad



Positional Alignment for the Circulation data was derived from the San Bernardino County Street Network Basemap
Positional accuracy of map data is plus or minus 40 feet.

Airport Runways

- Runway location

Map data compiled on 7 and 1/2 and 15 minute USGS quad-range maps by J. J. VanHouton and Associates, Inc., 1988
Positional accuracy of map data is at best plus or minus 750 feet

Jurisdictional Control

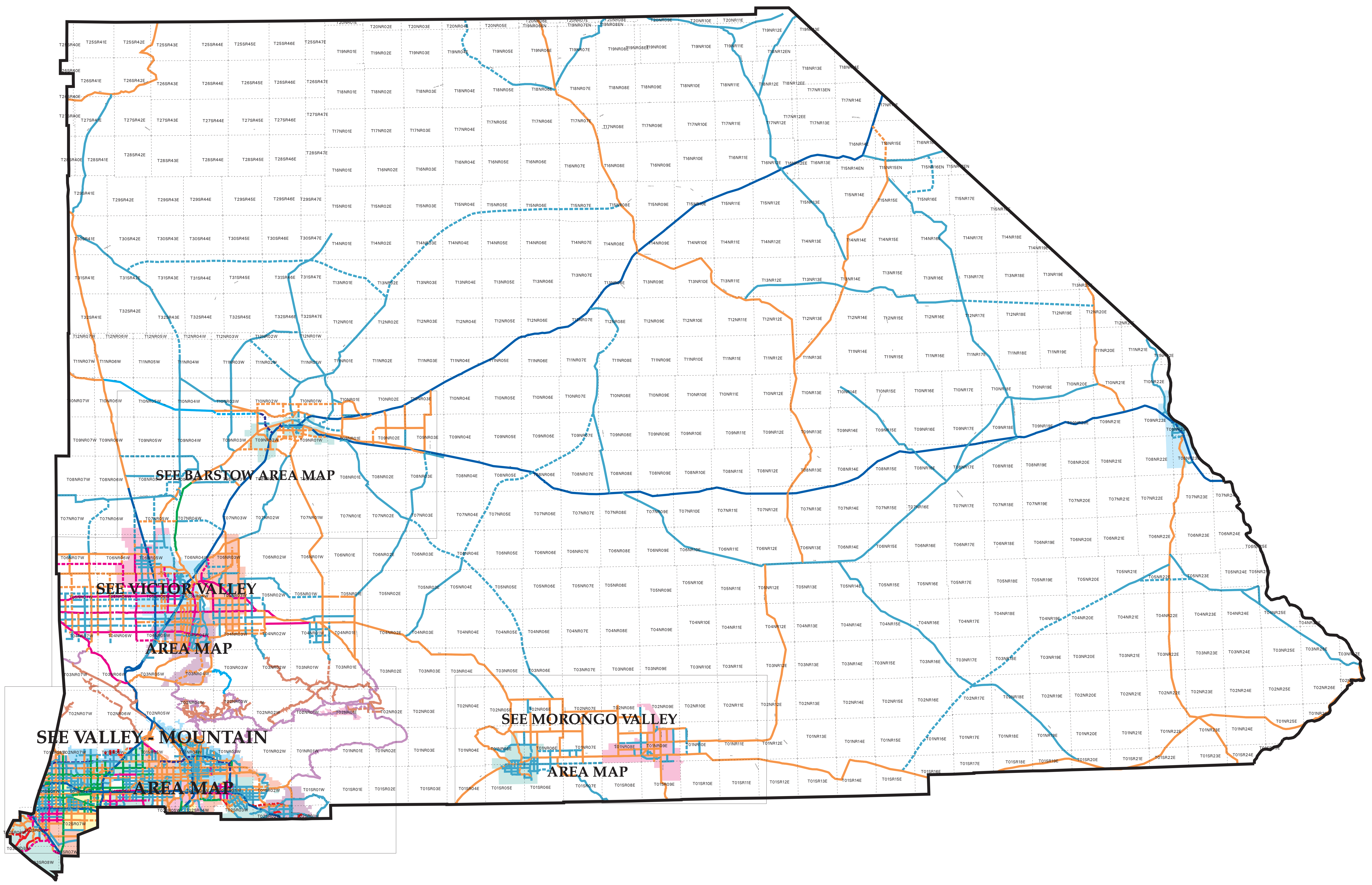
- Private Unincorporated Lands
- Bureau of Land Management
- National Parks and Monuments, National Forests and Wildlife Refuges
- Military Reservations (includes U.S. Army, Navy, Air Force, and Army Corps of Engineers)
- State, County, and Municipal Lands
- Indian Lands and Reservations
- Unclassed Water Body
- Incorporated Cities

Map data originally compiled onto USGS 15 minute quadrangle maps from BLM Surface Management Status maps dated 1978 to 1983, aerial photos, orthophotos, and other sources.
Updates provided by BLM Needles Resource Area Office in Needles, CA, and recorded in June 1988.

OFFICIAL CIRCULATION AMENDMENTS

ORDINANCE #	DATE	BOARD OF SUPERVISORS
3422	11/19/99	

This map was plotted May 08, 2006



SEE BARSTOW AREA MAP

SEE VICTOR VALLEY AREA MAP

SEE MORONGO VALLEY AREA MAP

SEE VALLEY MOUNTAIN AREA MAP

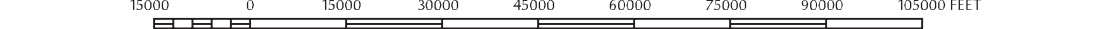
San Bernardino County Official Land Use Plan

GENERAL PLAN

Circulation and Transportation

SCALE 1:360000

1 inch on the map represents 30000 feet on the ground



County Wide

